

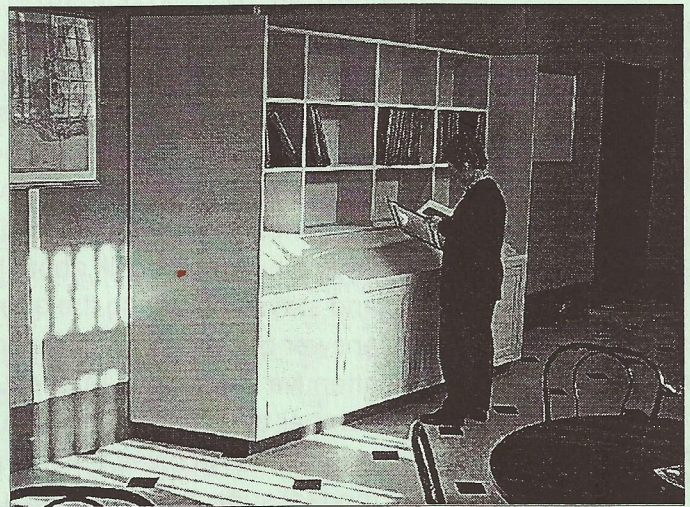
## Friends of Gosport Museum

### Contributions to

The Newsletter  
Editor  
Gosport Museum  
Walpole Road  
Gosport  
Hampshire  
PO12 1NS

## Friends help fund new bookcase in Coffee Shop

Have you seen the new browsing bookcase in the Coffee Shop where copies of photographs and information about Gosport's history are now available for the public without the bother of using the Resources Room on the first floor. This facility is still available to researchers, however by having information available in the Coffee Shop it is anticipated that many more visitors to the museum will be able to browse as part of their visit. The topic binders are already attracting much attention and are encouraging visitors to



delve further into the history of Gosport.

The Friends have contributed £400 towards the cost of the bookcase, which will in time be filled with information from the

museum's collections of photographs and printed ephemera. Curator, Ian Edelman and museum staff are very grateful to the Friends for helping towards this very useful piece of furniture.

This newsletter was printed and produced at Gosport Museum.

The views expressed are not those of the Hampshire County Council Museums Service or its officers.

Our Christmas tea-party was a much enjoyed get-together, with more members and friends attending than in previous years. Eastleigh Museum was represented there by the Chairman of its Friends and his wife, together with the Secretary and his wife. Eastleigh Friends are anxious to increase their membership and their funds, so we shall give what help we can towards that.

There is a coach trip to Milestones, Hampshire County Council's huge new museum at Basingstoke, being run by Priory Coaches on 24th April, leaving at 10.30 am and returning to Gosport at 6.30 pm. The cost per seat is £12.00 (£11 to senior citizens). If you wish to take part, please book this directly at Priory Coaches in Gosport Bus Station (tel.no. 02392 588451).. It's well worth a visit!

# Friends of Gosport Museum Newsletter

## Committee

Chairman  
*Jennie Hall*

Vice Chairman  
*Bill Mansfield*

Hon Secretary  
*Mary Payne*

Assistant Hon Sec  
*Miss R Gibaud*

Membership Secretary  
*Miss M Roberts*

Projects Editor  
*Joan Russell*

Treasurer  
*David Moore*

## Committee Members

*Mrs J Adams*

*Mrs M Colyer*

*Mrs M Duly*

*Miss J Symonds*

*Mr R Whiteley*

## 2000 - a busy year for the Friends

Last October was busier than usual for the Friends, with a splendid lecture on the 25th, by Colin Bowden entitled "Hearts of Oak". This described life in the Navy during Nelson's time and the Battle of Trafalgar, with slides and accompanying music. And then on Halloween, a week later, David Rymill, of Hampshire County Records Office gave a lunch-time talk about his work and stayed on during the afternoon to answer questions from his most attentive audience. As a result, a number of us have joined the Hampshire Archives Trust which for a modest subscription issues a 64-page journal twice a year. (Enquiries for a subscription to David Rymill at Hampshire Records Office.)

In September, Mary Payne, Jennie Hall and Ian Edelman attended the Annual Meeting held at Chilcomb House for Friends of Museums throughout the County. Eastleigh, the Curtis Museum and Allen Gallery at Alton, Andover and Havant museums and St Barbe's at Lymington were represented. This year (the sandwiches and coffee as good as ever) one of the main topics for discussion was suggested by the Friends of St Barbe's as to whether or not they should make an entry charge to museums to young people. Generally the feeling amongst those attending was against the idea, and there was some discussion as to ways and means of attracting 18-24 year olds into museums. At St Barbe,

Lymington - an independent museum, managed in partnership with Hampshire County Council - there is a problem in that the volunteers manning the museum are nervous about having to deal with teenagers. Stephen Locke reminded us that all groups of visitors should be made welcome and that discrimination had to be avoided.

There was also some discussion about recruiting members to Friends. Andover's Museum meets each month and advertises its programme of events in shops around the town. It also attracted a younger than average age group amongst its membership.

In November, Chairman Jennie Hall made a brief visit to Dulwich for part of the British Association of Friends of Museums (BAfM) annual conference, held at the Dulwich Picture Gallery. The theme was New Century, New Friends, and was introduced by the Chairman of BAfM, Dr Liz Mackenzie.

Dulwich Picture Gallery trains a band of volunteers to speak at schools and other institutions on the pictures in the Gallery, and Gillian Wolfe, the Head of their Education Department, described how this training is organised and encouraged. Jean Brown, the Honorary Curator of the Lawrence House Museum, Launceston, talked most entertainingly about how their Museum was established; Sam Mullins who chairs the Association of

# Friends of Gosport Museum Newsletter

## Friends of Gosport Museum

Independent Museums and is Director of the London Transport Museum talked on Perennial Issues and Current Concerns, and there was also a talk by John Iles on Travel for Non-Profit Institutions. He is Director of the Heritage Group Travel.

After lunch the Chairman headed for the Gallery itself: splendidly housed in a purpose built Victorian building, the pictures there are magnificent and well worth a visit.

### Childhood Memories

It is truly said that as age increases past memories become stronger, the trouble being that one cannot remember what one did yesterday, or where one put the car keys an hour ago! My first clear memory was of Malta, the brightness of the sunshine and the whiteness of buildings. We must have travelled by sea, my mother, two sisters and I, leaving my grandfather, and older brother and sister in Portsmouth, and joining my father who, no doubt, had gone ahead to take up the post of a Manager for McEwans Brewery in Valetta.

My parents, sister Helen and I had been there before, when Daddy was in the Royal Navy, as Helen and I were born in Malta but returned to England when Helen was two and I but eleven months old.

My father, the late Lewis Lancaster Hanbidge (known to so many as Lew) grew up in Liverpool. His father was a Colonel in the Army and they lived in a Barracks situated in the poorer part of Liverpool where Daddy's first memories were of the poor 'latch-key' children, some going to school without shoes whilst both parents were out scratching a living. It made a lasting impression on him and he became a staunch Socialist.

He also witnessed unkindness and discrimination based on differences, for example against Jewish people, and this, too, was something which he spent his life trying to change.

He left home and travelled to Portsmouth at an early age to join the Royal Navy as a boy artificer, training at the 'Fisgard' - which I believe was situated at Hardway. He sent his first shilling home to his mother with a short letter saying he hoped it would be of help to her: quite a sacrifice, but of course she kept

it with the letter which we still have to this day.

I do not know how he met my mother but his dark good looks and flashing eyes led her to run away from school, and they married at 18 years old. In the next few years, Olive, then Lewis arrived, and it was some years later that Helen, then I, and then Mona increased the family.

Back to Malta where, in the end, we stayed for less than a year and then travelled back by sea and over-land by train, arriving again in Portsmouth and then across to Gosport in 1932. Younger brother John added to the family later that year.

Helen, Mona and I went to Gosport High School which was then in Grove Avenue. We used to walk from Grove Road, up Mill Lane, along Forton Road and over the railway footbridge at the end of Albert Street. We were often teased by children from Newtown School because we were in school uniform. The school was in an old house, run by Mr and Mrs Roberts, old Mrs Roberts, his mother, and eventually joined by a Miss Watson and a Miss Wall. My father decided after a year or so that we were not doing too well

Continued over

# Friends of Gosport Museum Newsletter

## DATES FOR YOUR DIARY

Wed 21 Mar 2.30pm  
Pubs, Inns & Taverns.  
Talk by Tony Cross  
Curator of Curtis  
Museum, Alton.

Sat 12 May BAFM  
Regional Meeting  
St Barbe Museum,  
Lymington.

Tue 22 May 7pm  
Friends AGM, followed  
by a talk by Mary Payne  
on the work of the  
Census Office.

Sat 30 June: Summer  
Outing to Broadlands,  
Romsey (details from  
Brian Pladdys  
tel.92582469)

Wed 18 July 7pm  
Sea Fencibles in  
Gosport, 1798-1810.  
Talk by Roger Hart

Thu 13 Sep  
Autumn Outing to  
Athelhampton House,  
Dorset (details enclosed)

Thu 11 Oct 7pm Talk by  
Dr. Stephen Brooks on  
the D-Day Embroidery.

Talks take place at the  
Museum. Please give  
your name to front desk if  
you wish to attend.

there and we were enrolled in Lynton House, Kingston Crescent in Portsmouth and thereafter caught the ferry across the harbour each day. The ferry fare then was one ha'penny before 9 am, then a penny.

Those were the days of gaberdine raincoats for school, which were not very warm. The journey was often cold and wet and we all had chilblains in winter. We were met by someone from the school in a car or often in our school bus which was painted in school colours with a replica of the hat-band around it! Those were the days of mudlarks by the Portsmouth ferry approach, chants of "Hark the Herald Angels Sing - Mrs Simpson's pinched our King!", and Saturday afternoon matinees with Rin Tin Tin at the Criterion.

The Ritz 'super' cinema was built, and the Forum in Stoke Road, and as I recall for a brief period Gosport had five cinemas, with the Criterion, Gosport Theatre, and The Olympia in Stoke Road before they closed.

One of the best things that happened for our family was my father hiring a beach hut at Stokes Bay. The Council had a row of smart green wooden huts near Alverbank, and after having one of these for a year, we had one of the private huts on Council sites where the Paddling Pool is now situated. My memories

of summer were all of the fun and friends we had at Stokes Bay. Our young feet soon became used to the pebbles. I remember one summer when my sisters and I would rise early to go for a pre-breakfast swim. We would walk from Grove Road - or occasionally catch the first bus as far as the end of Gordon Road, then through Green Lane and out to the bay for a swim and walk back. Needless to say we were not much use for the rest of the day!

The war came and that changed much for us at it did for everyone. Stokes Bay was closed to the public. My father was recalled to the Royal Navy and cycled each day to Lee-on-the-Solent to oversee work on aeroplane engines - I believe they were Fairy Swordfish.

Lynton House closed and I enrolled in Underwood's Secretary College, near Portsmouth Guildhall, travelling back and forth by bike - even for lunch so that my mother could have a break in her daily routine. Helen went to London to study with my Aunt Jenny, and Mona continued school at a convent in Fareham. Our childhood was over.

Joyce Upperton



*Hampshire County Council*  
MUSEUMS SERVICE